

New Gallery exhibition focuses on The Body

An examination of the human form is the focus of the National Gallery's final exhibition at Alexander Place, 25 April at 6.30 pm.

Entitled *The Body*, the exhibition and sale comprises sculptures by Caymanian artist Al Ebanks and drawings by the late English artist and sculptor Henry Moore.

National Gallery director, Leslie Bigelman says it explores preconceived notions of the

human body and its representation in art.

"A sculpture, or a drawing, might not portray the ideal proportions associated with the feminine form. Instead they express a power and simplicity uncluttered by unnecessary detail. The pieces in the show work because they have vitality. Swelling shapes, undulating extensions and rounded indentations reflect nature. They also create a rhythmic flow of line

that leads the eye from one place to another," Ms Bigelman adds.

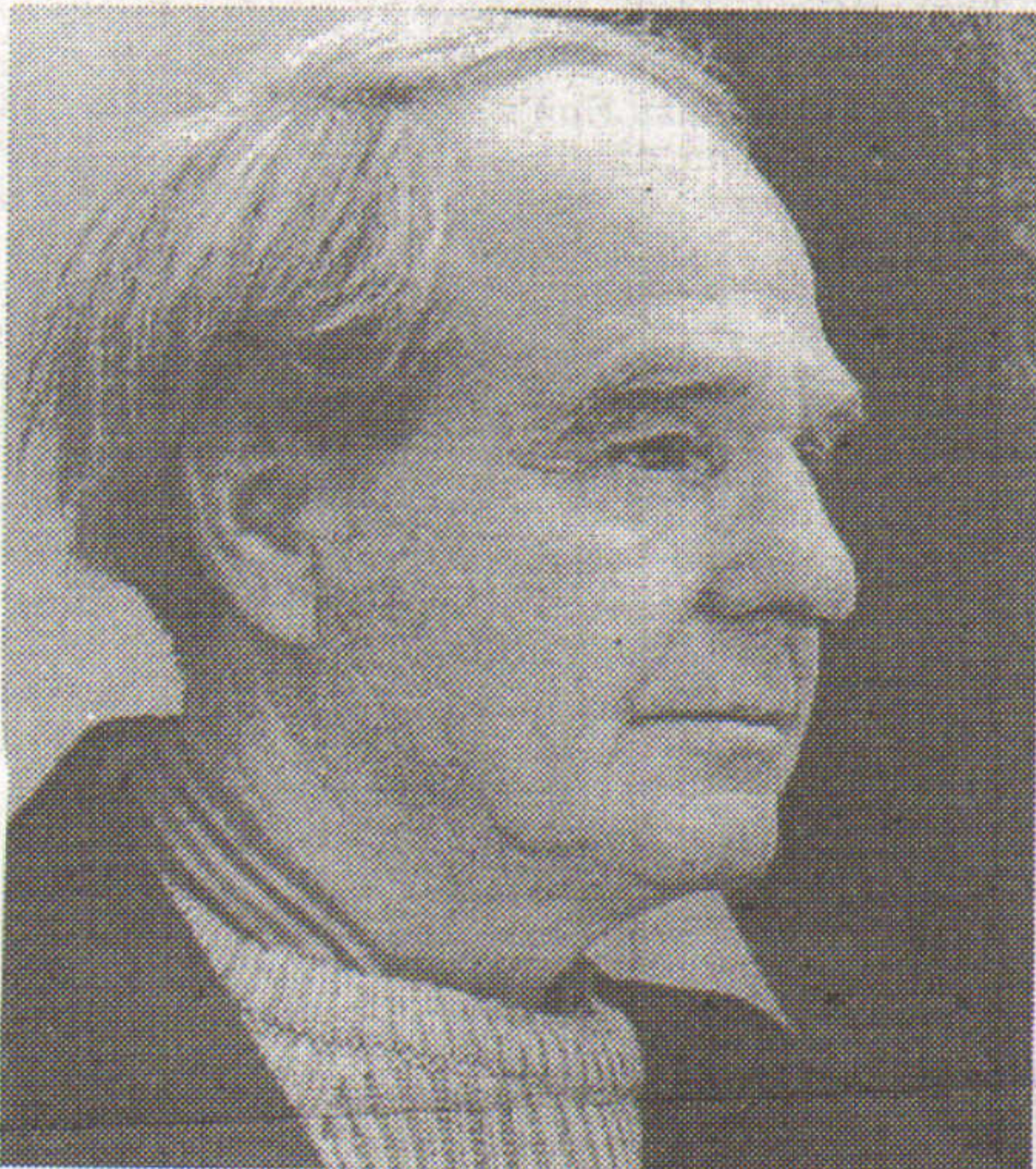
An interest in the relationships that figures have with each other and their surroundings is common to both artists' work. Al Ebanks's subjects include his sleeping niece, friends, family and the relationship between men and women. There are also two separate works entitled *Man, Woman and Child*.

For his part, Henry Moore experimented with the classical theme of *Mother and Child* throughout his career particularly after the birth of his daughter. Attendees will be able to view an extended series of prints on this subject, including some that were editioned and signed just a month before his death in 1986, aged 88.

Following the public opening, the show continues through 26 June. During this time the gallery's opening hours will be Monday to Friday 9.30am -5pm.

All works in the exhibition will be available for sale. For more information, contact the Gallery at 945-8111.

The show is sponsored by the National Gallery and the Dart Foundation. (GIS)



Henry Moore. Photo supplied by NGCI